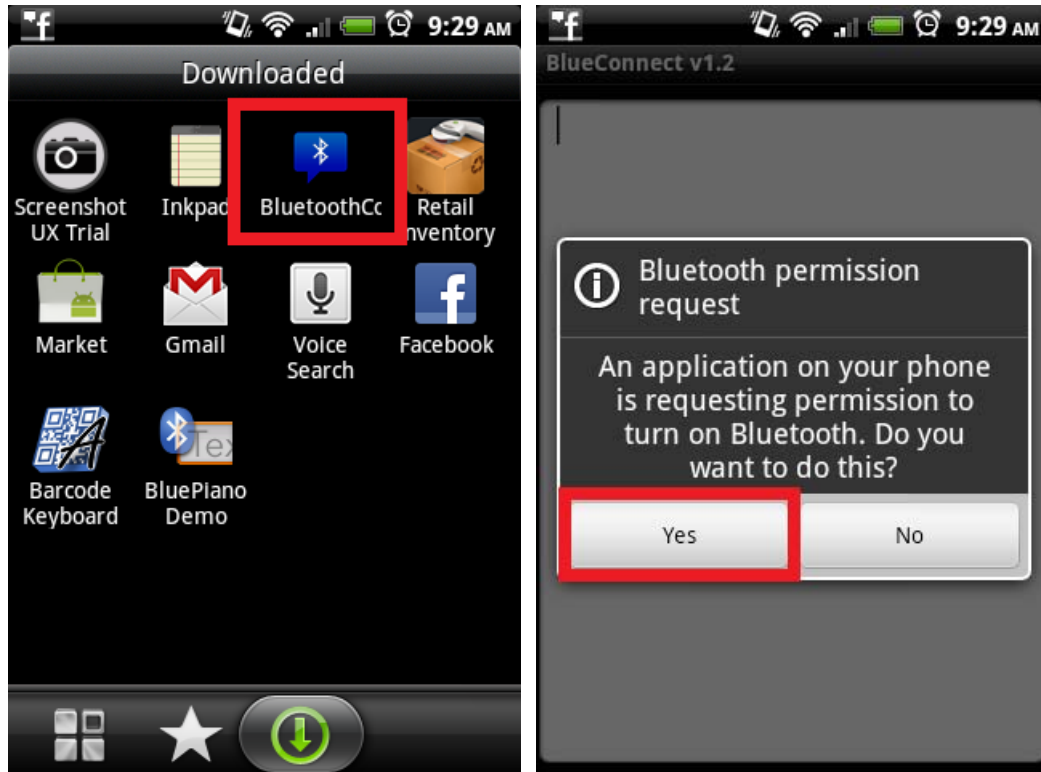


BluetoothConnect Instruction

(for Android OS mobile device)

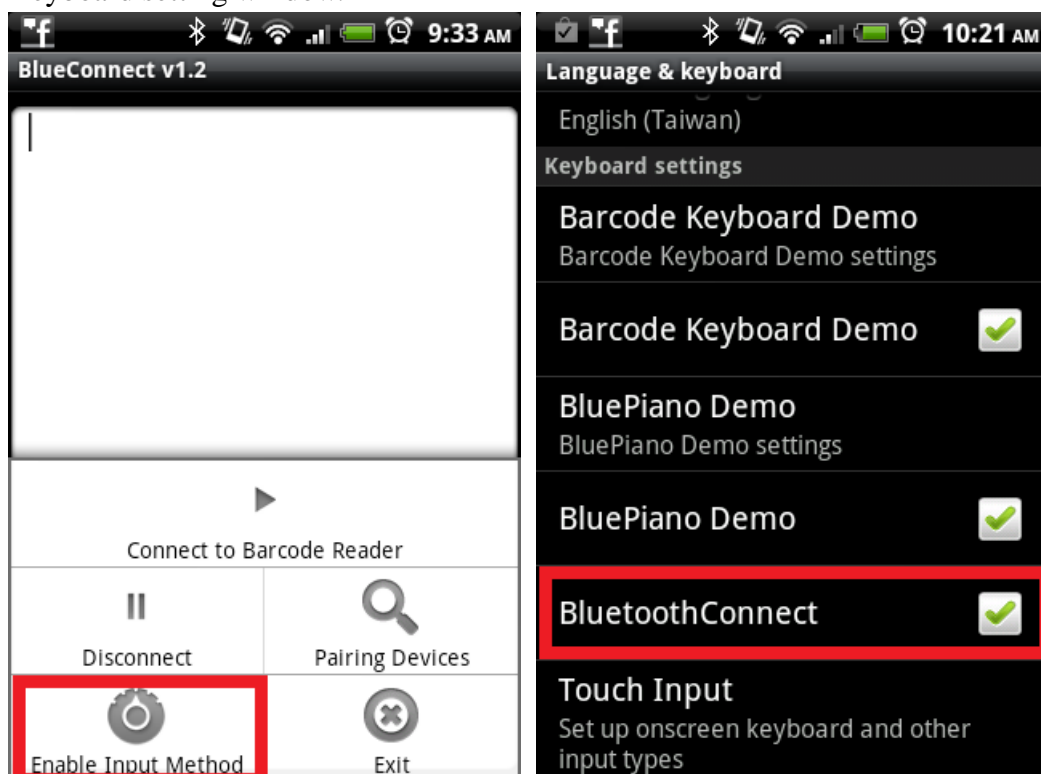
1. Download [BluetoothConnect.apk](#) onto your mobile device and install it.
2. Once you enter the BluetoothConnect, the application may ask you to enable Bluetooth connection, and then click [Yes].



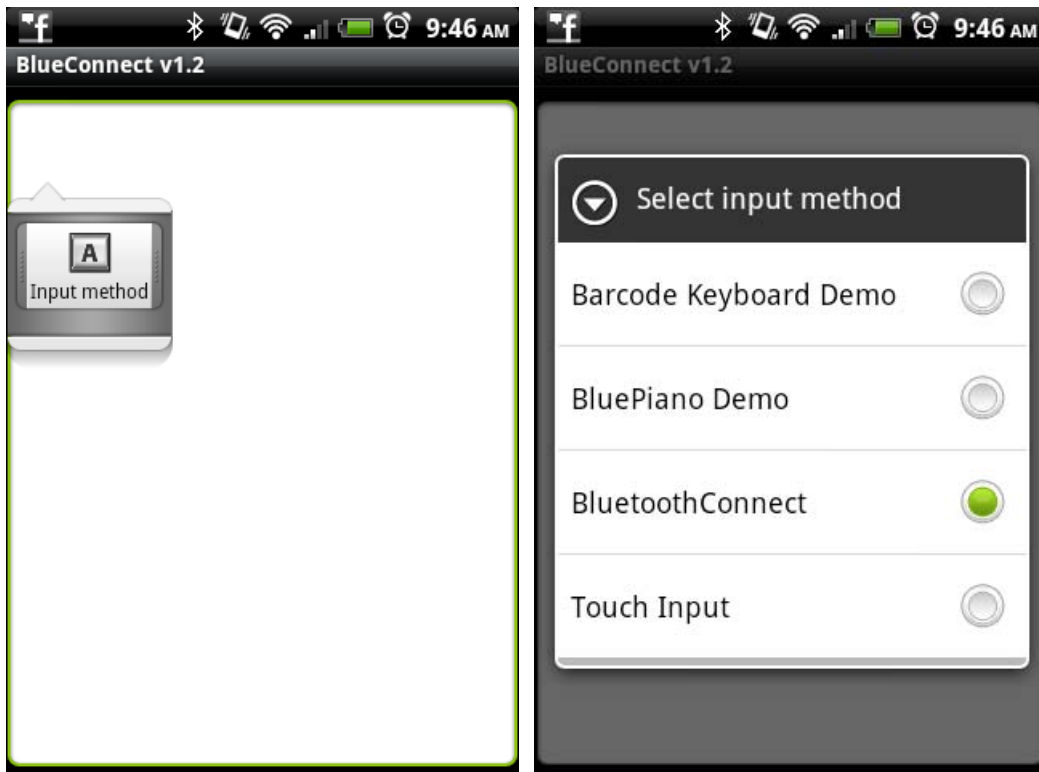
3. Click the Menu button to enable the settings menu.



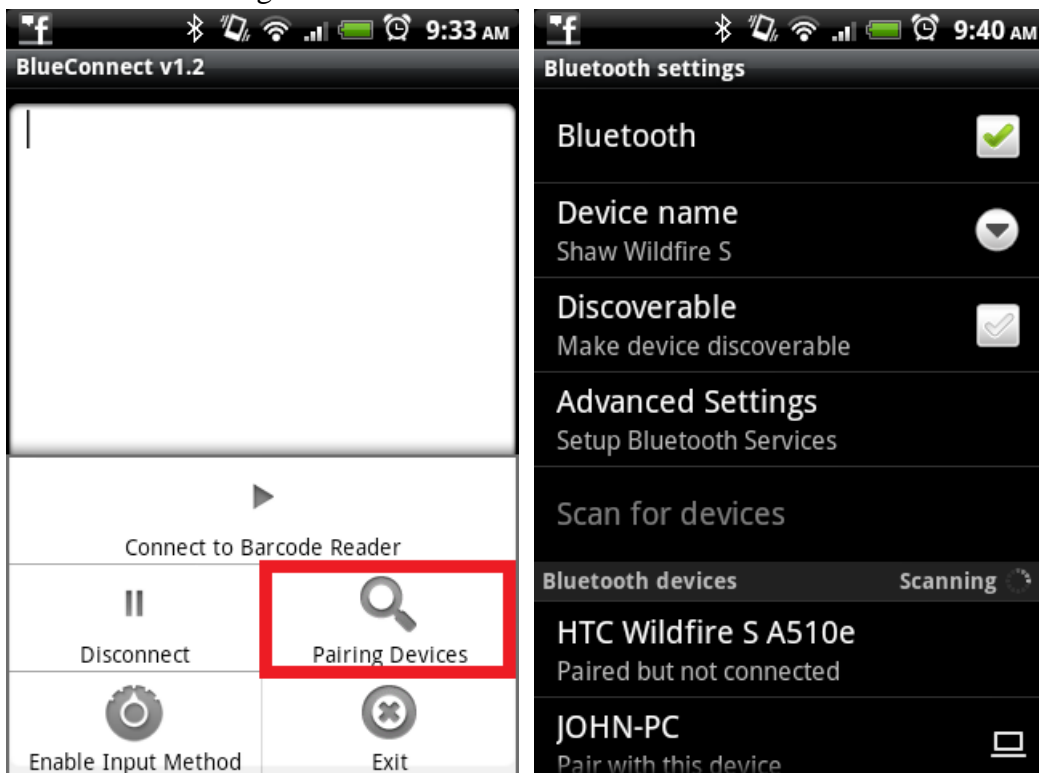
4. Click [Enable Input Method] and enable [BluetoothConnect] in the Language & Keyboard setting window.



5. Long press on the panel to enable Input method menu and select BluetoothConnect.









- Click [Pairing Devices] on the setting menu and the device will prompt you to the Bluetooth settings window

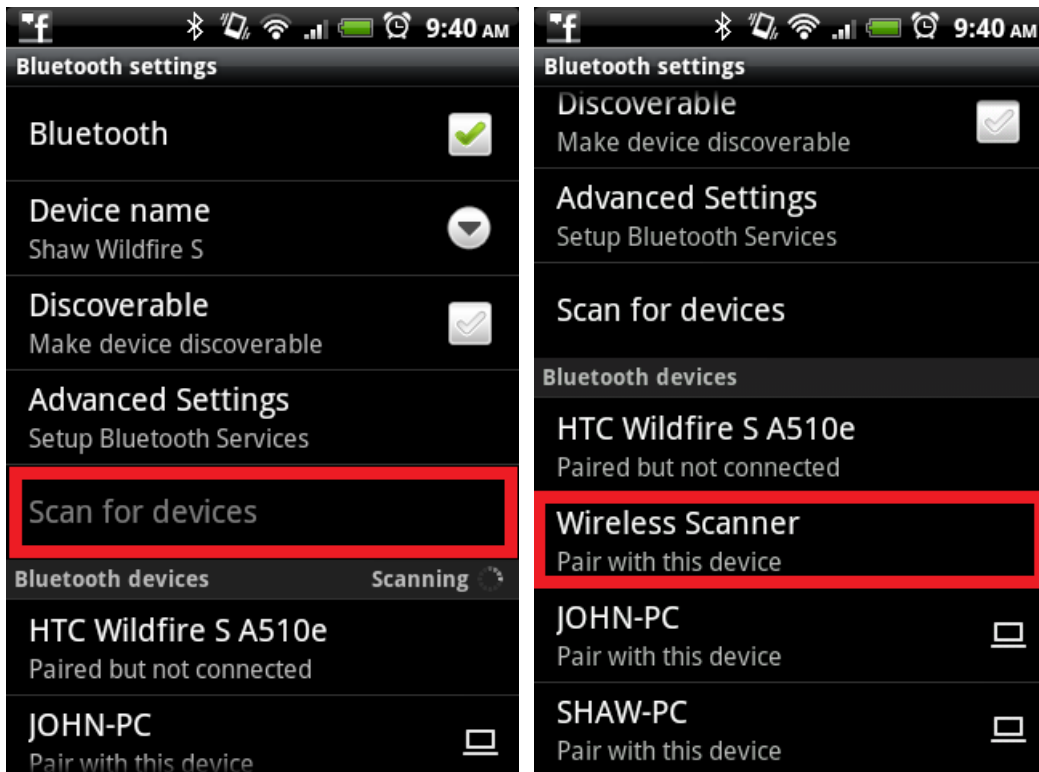


- Now enable your wireless scanner by pressing the button for 2 seconds until a long beep.

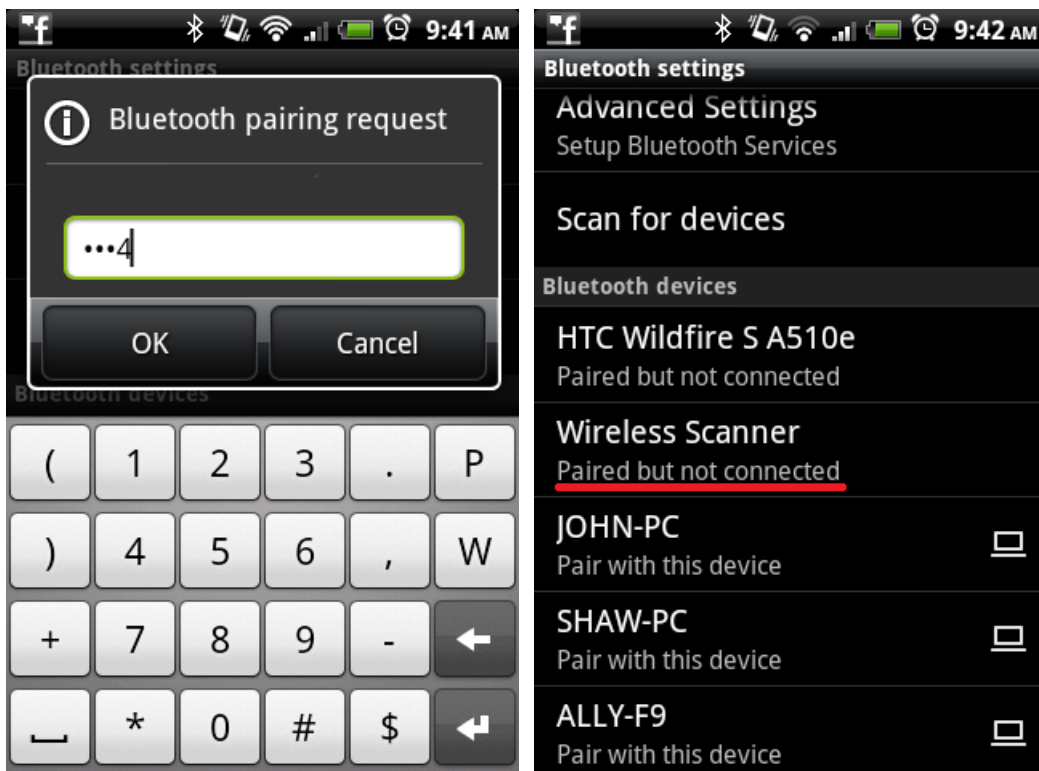
8. Scan [BT mode - SPP] configuration barcode. It can be found on the quick start guide or quick connection card.

GETTING CONNECTED 📶	PINCODE SETUP 📶
There are two modes of wireless communication:	
. E042\$  BT mode - SPP	
1. Press the trigger for 1 second to activate the scanner. 2. Scan [DISCONNECT] 3. Scan [BT mode - SPP]; the scanner will emit 10 beeps. 4. Select "Wireless Scanner" from discovered device list. The default pincode is "1234". 5. Open serial communication software with com port (see Device Manager) properly set up. 6. The scanner will beep twice to verify the connection.	
. E043\$  BT mode - HID	
1. Press the trigger for 1 second to activate the scanner. 2. Scan [DISCONNECT] 3. Scan [BT mode - HID]; the scanner will emit 11 beeps. 4. Select "Wireless Scanner" from discovered device list. 5. The Bluetooth application may prompt you to scan a pincode(see PINCODE SETUP 📶 section) it generated. 6. The scanner will beep twice to verify the connection.	
. E031\$  Disconnect	
	STEP 1 Pincode Start  . E032\$
	STEP 2 Scan numeric barcodes (see NUMERIC BARCODES 📶 section on the next pages) based on the pincode generated by the Bluetooth application.
	STEP 3 Enter  \$TX
	STEP 4 Pincode Stop  . E033\$

9. Click [Scan for devices] on the Bluetooth settings window. Click [Wireless Scanner] to pair with your wireless scanner.

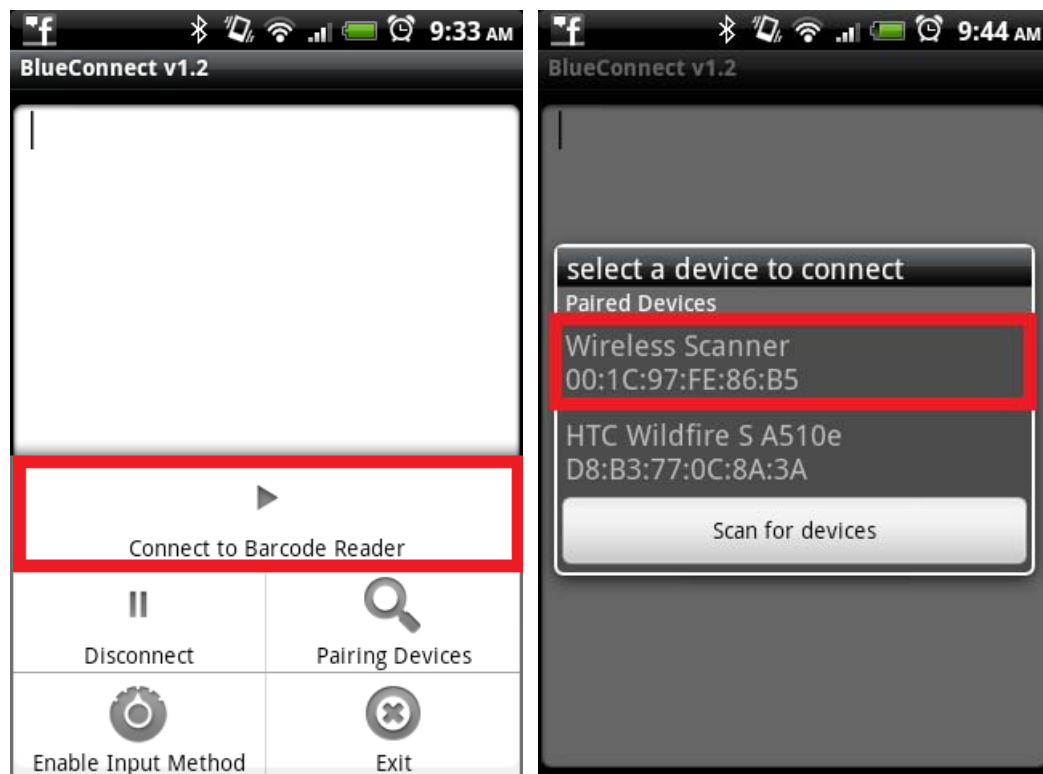


10. The default pairing code is 1234. After successful pairing, the description under Wireless Scanner will be “Paired but not connected”



11. Get back to BluetoothConnect, enable setting menu and click [Connect to Barcode Reader]. The scanner will beep twice to verify the successful

connection.



12. Now you will be able to transfer barcode data onto your mobile device.

